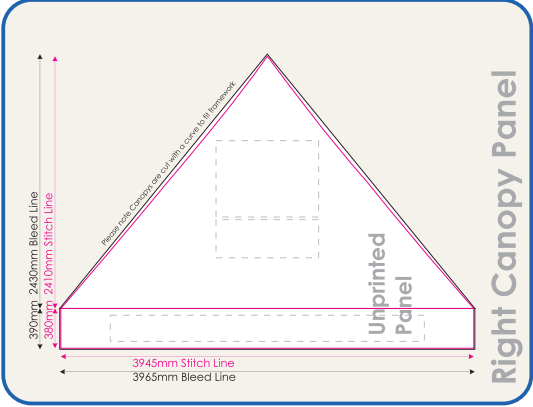
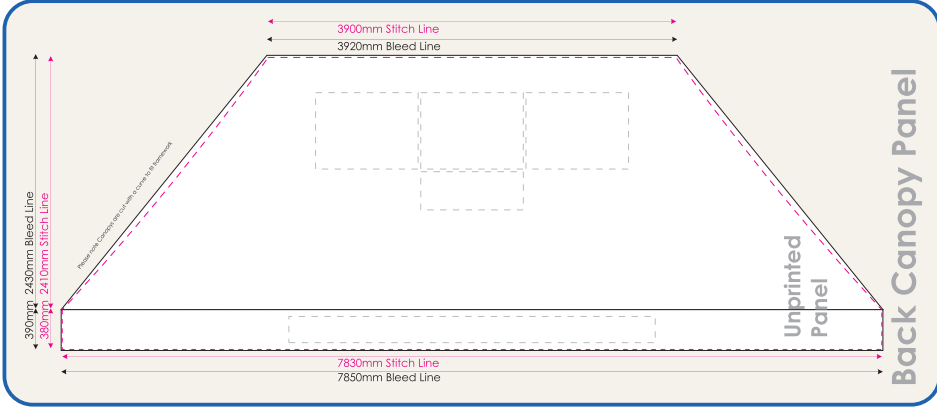
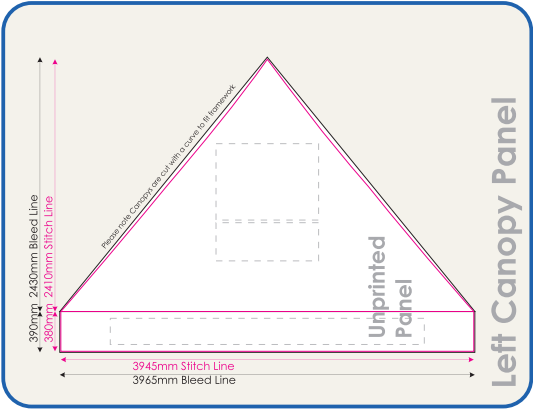
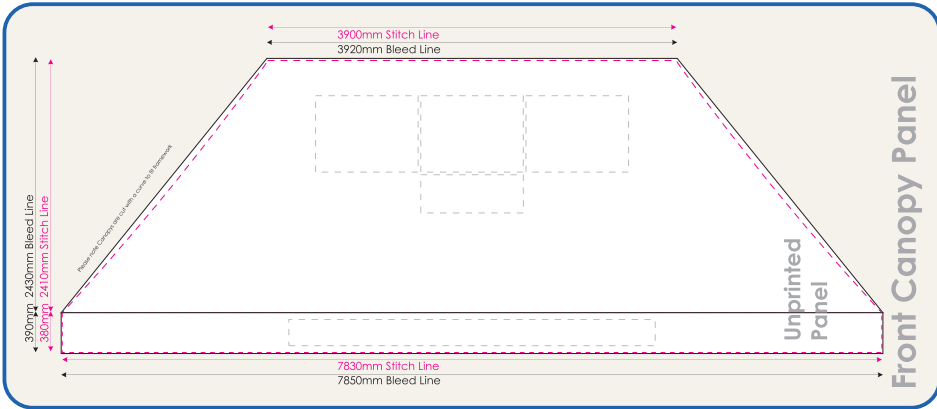


Quote reference:

4M x 8M Frame TBC

Printed Sections:



Artwork Note:

Please Note:

All artwork is printed in CMYK colour space. To ensure your correct artwork please convert all to an equivalent CMYK breakup with all fonts & strokes converted to outlines. Please be aware that slight colour variation may occur in the printing process from monitor to output. Rasterised artwork is printed at 300dpi. We advise full sized artwork supplied at 300dpi for best quality, we can work to 30dpi at a low quality print, Pixelation appears at 72dpi. Our visuals are copyright protected & are not be forwarded to other companies otherwise an art working fee will be enforced.

- Please check the following details are correct:
1. All company details. ☐
  2. Spelling. ☐
  3. Phone numbers, Addresses + URL's. ☐
  4. Positioning of artwork. ☐
  5. Colours. ☐
  6. Correct size. ☐

Please fax back to 01295 263750 or sign, scan, attach & reply to your emailed quote.

Print Name.

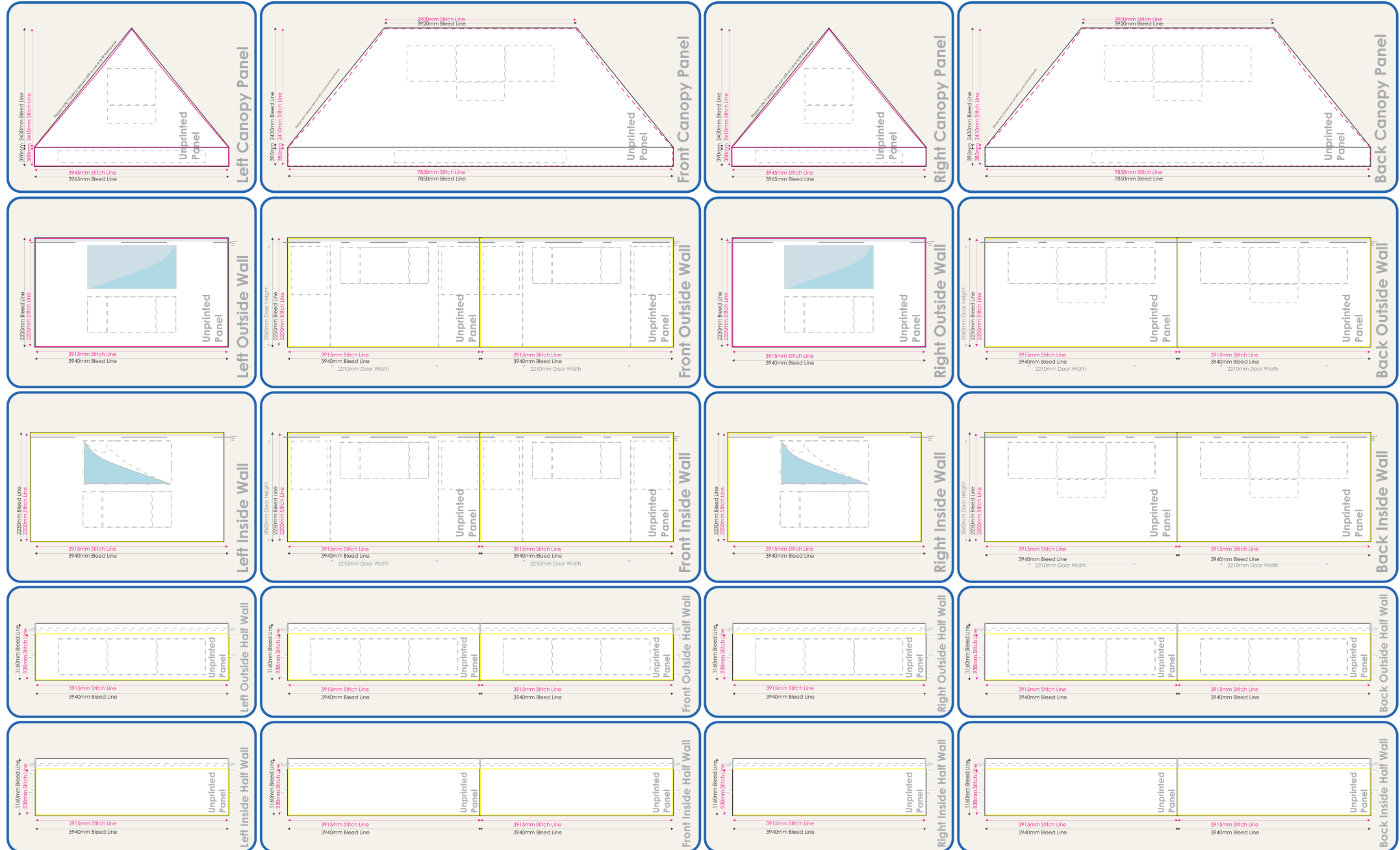
Signature.

Quote reference:

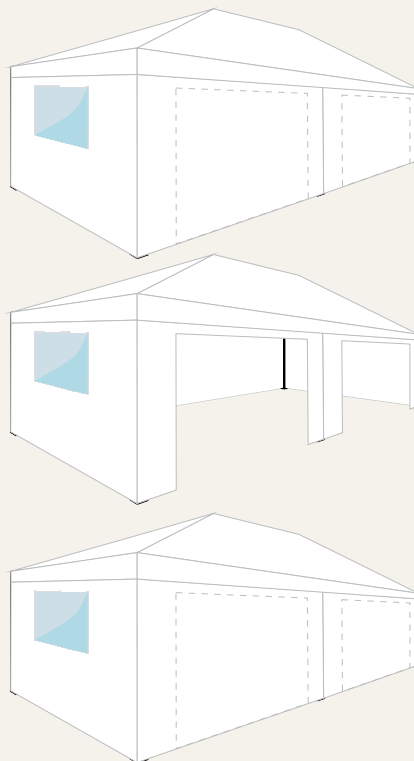
## 4<sub>M</sub> x 8<sub>M</sub> Frame TBC

Printed Sections:

This template is designed to a 1% scale of the final product



Artwork Note:



Please check the following details are correct:

1. All company details. ☐
2. Spelling. ☐
3. Phone numbers, Addresses + URL's. ☐
4. Positioning of artwork. ☐
5. Colours. ☐
6. Correct size. ☐

Please fax back to 01295 261087  
or sign, scan, attach & reply to your emailed quote.

Print Name. \_\_\_\_\_

Signature. \_\_\_\_\_

Please Note:

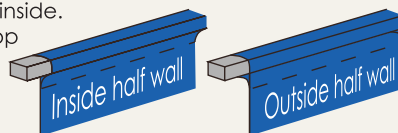
All artwork is printed in CMYK colour space. To ensure your correct artwork please convert all to an equivalent CMYK breakup.

Please be aware that slight colour variation may occur in the printing process from monitor to output. Rasterised artwork is printed at 300 dpi. We advise full sized artwork supplied at 300 dpi for best quality, we can work to 72dpi at a low quality print.

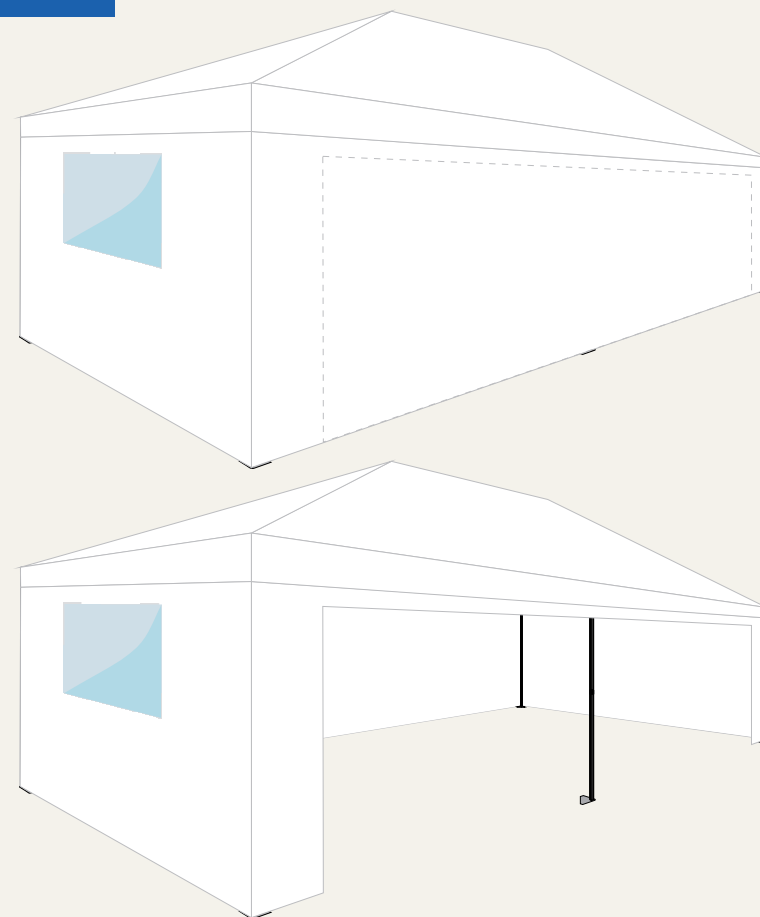
Our visuals are copyright protected & are not be forwarded to other companies otherwise an art working fee will be enforced

Note: "Halfwalls" are folded over a crossbar and stitched onto the inside.

For front printing the artwork should be up to the designated top of the half wall stitch line. Inside artwork is not available.



Front



Back

