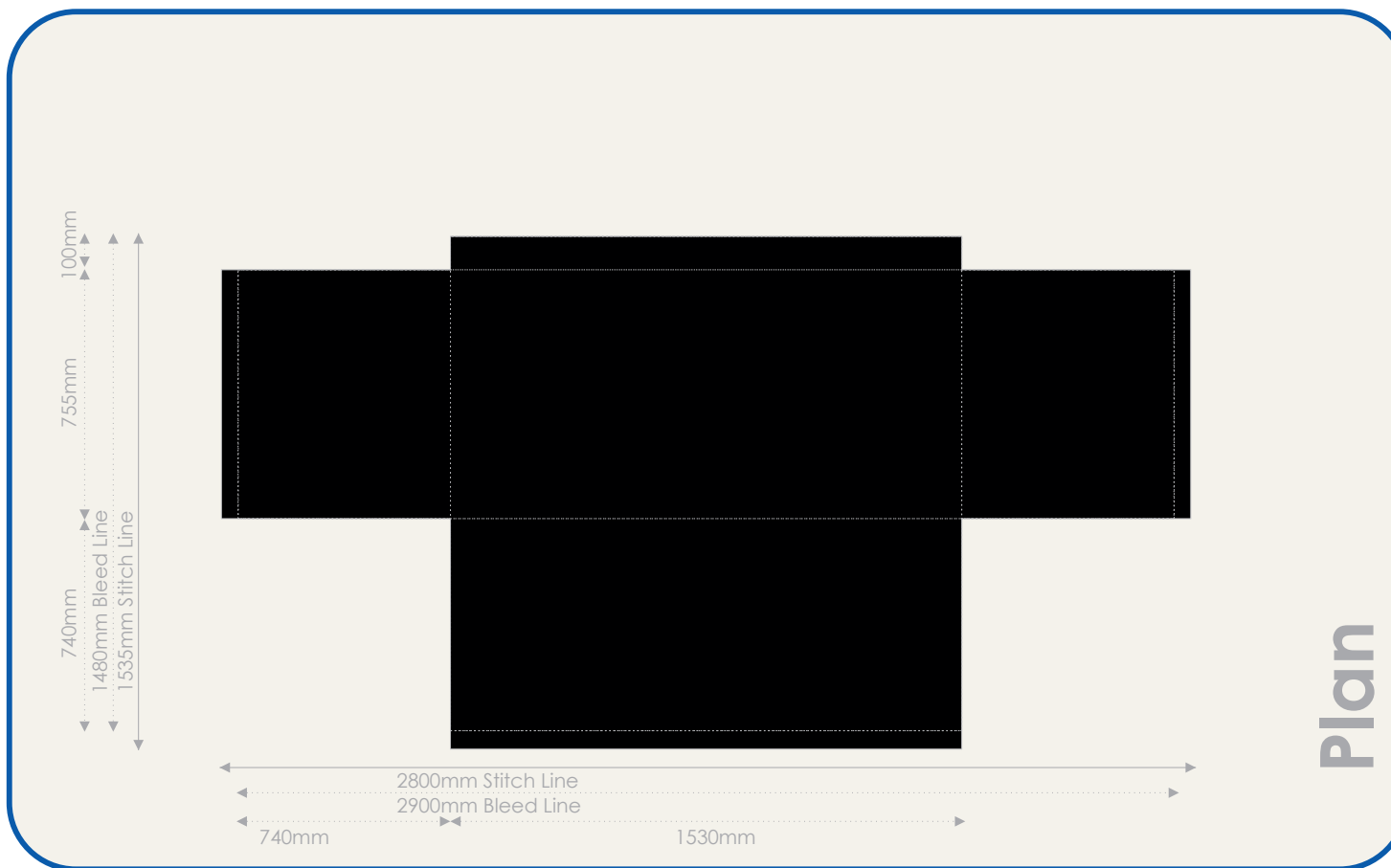


Quote reference:

## 5ft Fitted Table with open back

Printed Sections:

This template is designed to a 3% scale of the final product



### Artwork Note:

### Please Note:

All artwork is printed in CMYK colour space. To ensure your correct artwork please convert all to an equivalent CMYK breakup. Please be aware that slight colour variation may occur in the printing process from monitor to output. Rasterised artwork is printed at 300 dpi. We advise full sized artwork supplied at 300 dpi for best quality, we can work to 72dpi at a low quality print. Our visuals are copyright protected & are not be forwarded to other companies otherwise an art working fee will be enforced.

Please check the following details are correct:

1. All company details.
2. Spelling.
3. Phone numbers, Addresses + URL's.
4. Positioning of artwork.
5. Colours.
6. Correct size.

Please fax back to 01295 263750  
or sign, scan, attach & reply to your emailed quote.

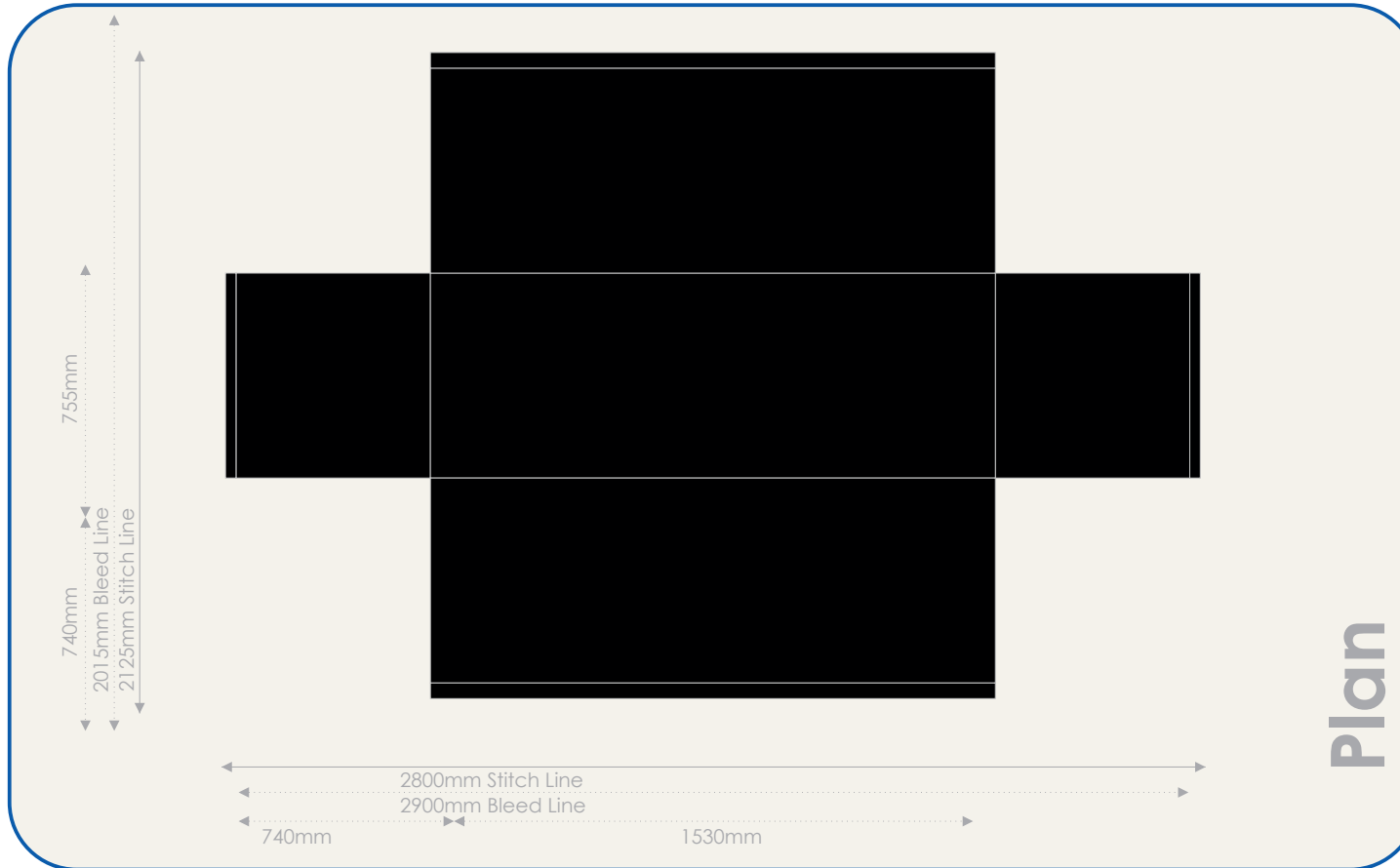
Print Name. \_\_\_\_\_

Signature. \_\_\_\_\_

Quote reference:

## 5ft Fitted Table with closed back

Printed Sections:  
This template is designed to a 3% scale of the final product



### Artwork Note:

### Please Note:

All artwork is printed in CMYK colour space. To ensure your correct artwork please convert all to an equivalent CMYK breakup. Please be aware that slight colour variation may occur in the printing process from monitor to output. Rasterised artwork is printed at 300 dpi. We advise full sized artwork supplied at 300 dpi for best quality, we can work to 72dpi at a low quality print. Our visuals are copyright protected & are not be forwarded to other companies otherwise an art working fee will be enforced.

Please check the following details are correct:

1. All company details.
2. Spelling.
3. Phone numbers, Addresses + URL's.
4. Positioning of artwork.
5. Colours.
6. Correct size.

Please fax back to 01295 263750  
or sign, scan, attach & reply to your emailed quote.

Print Name. \_\_\_\_\_

Signature. \_\_\_\_\_